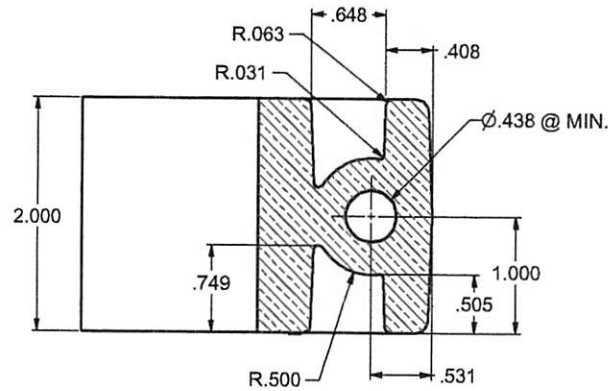
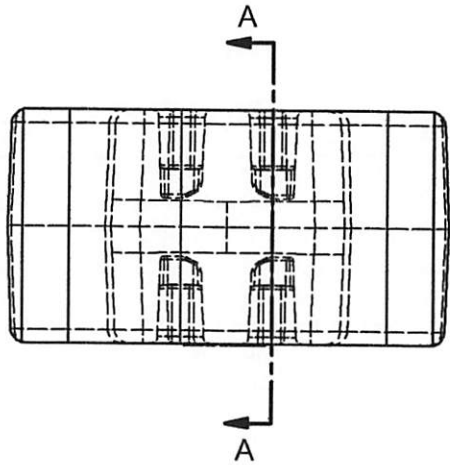
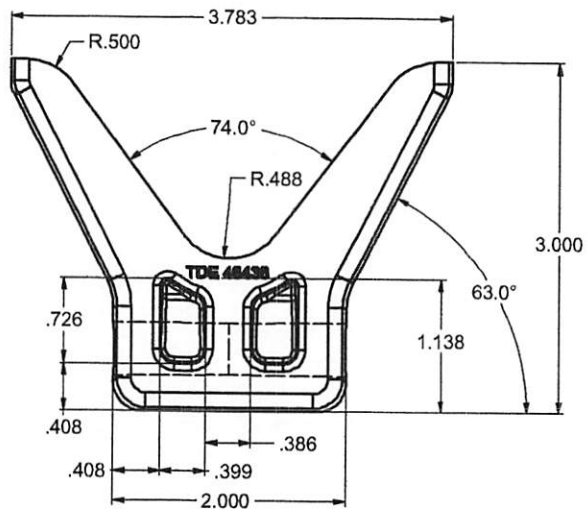
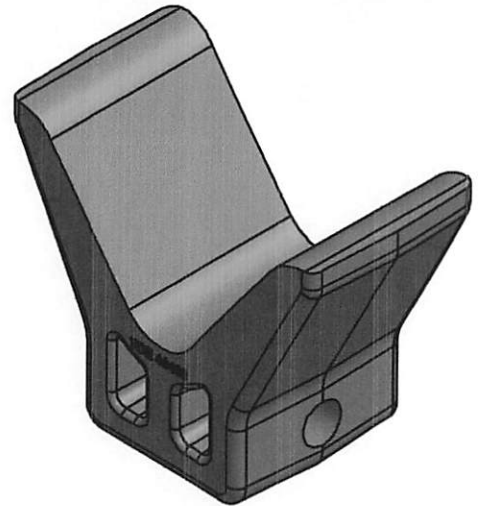



REVISION HISTORY				DETAILS	
1	12/14/2004	KFV	R/D	MODEL NO. TO 6438 (86420)	
2	12/20/2004	KFV	R/D	MODIFIED CORE POCKETS DEEPER	



SECTION A-A



- NOTE:**
1. ALL DIMENSIONS ARE IN INCHES.
 2. GENERAL DRAFT ANGLE IS 2.0°.
 3. DRAFT ON .438Ø THRU HOLE IS 0.5°.
 4. TEXT "TDE 46438" TO BE MOLDED-IN AS SHOWN. LETTERS ARE .125" HIGH, RAISED ABOVE PART SURFACE .010 INCH.
 5. CHECK THRU-HOLE W/CHECKING GAGE TO ASSURE .438Ø MIN. IS MAINTAINED.

Scale:	Unspecified Tolerances:	 Tie Down Engineering 590 WHEATON DRIVE ATLANTA, GEORGIA 30356
Date:	Fractions ± 1/32 Decimal ± .03 Decimal ± .005 Angles ± 0.5° Holes ± .005	
By:	2 INCH "Y" BOW BLOCK	
Approved By: Xx	Part Number: 46438	REV: 2